

规格书 Specification



24049



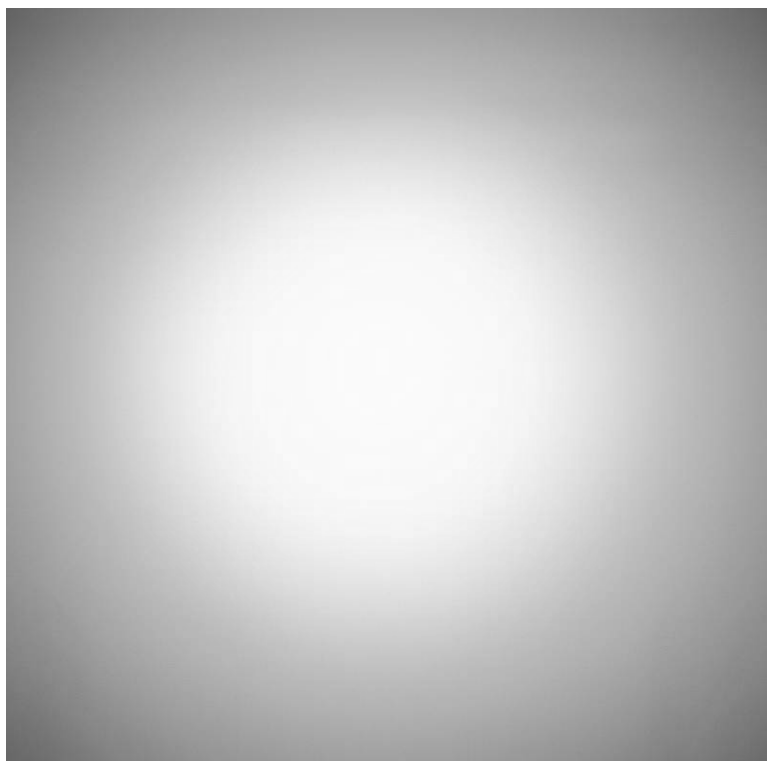
24050

产品特性 Feature

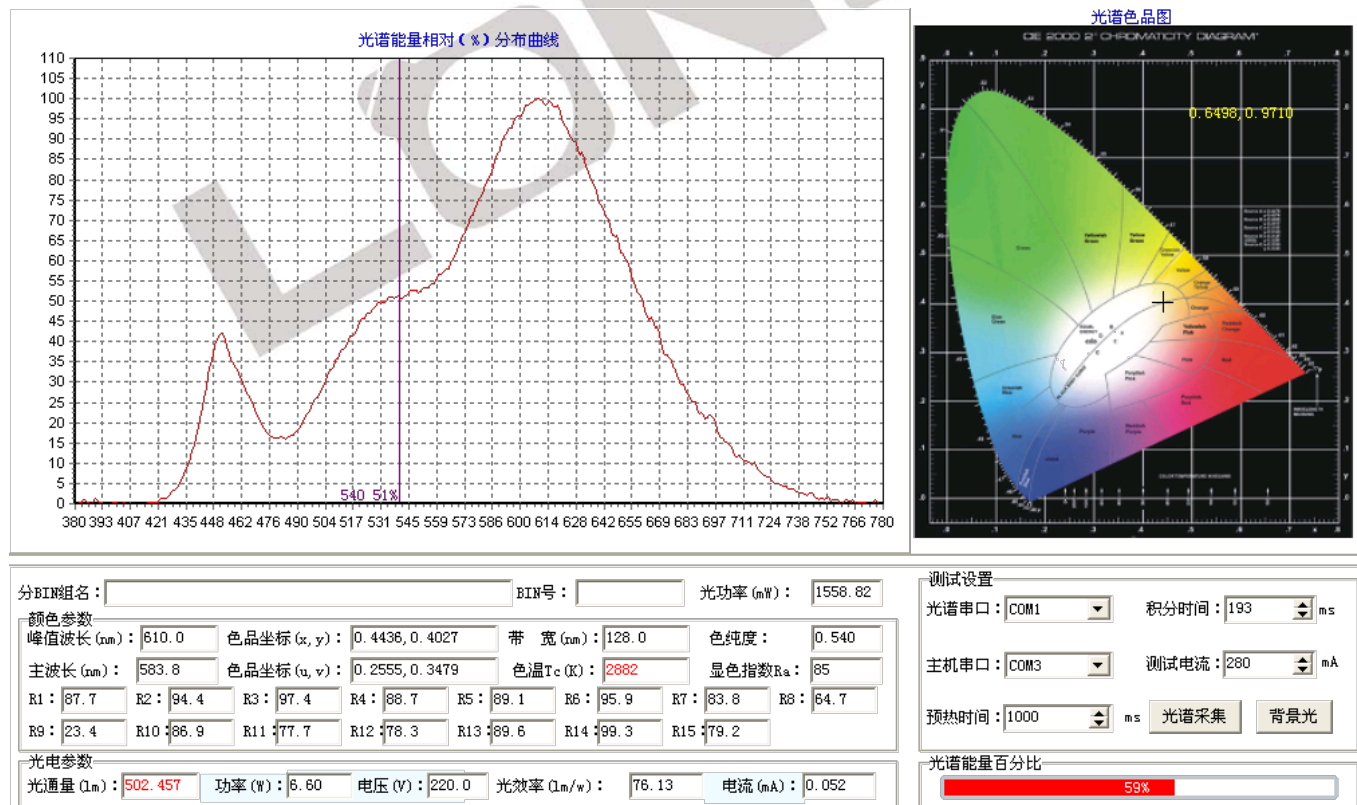
灯具名称(Lamp name): GU10 射灯 GU10 LED Spotlight	外形尺寸(Dimensions): Φ50*56mm	型号(Model): LS-GU10SL6.5W-R85K27B24 料号(Part number): 24049 / 24050	
额定功率 Rated Power	6.5 W	显色指数 CRI	≥ 85
额定输入电压 Rated Input Voltage	100-240V AC	色温 Color Temperature	2700-2900 K
工作频率 Operating Frequency	50/60 Hz	光束角 Beam Angle	24°
功率因数(PFC) Power Factor	≥0.65 @ 110V ≥0.55 @ 220V	光通量 Luminous	≥ 500 lm
工作温度 Operating Temperature	-10~45 °C	灯具材料 Material	铝+PC Aluminum & PC
工作湿度 Working Humidity	10~90%	平均寿命(室温) Average Life(Room Temp)	30,000 hrs
存储温度 Storage Temperature	-20~85 °C	成品重量 Net Weight	61 g
LED 封装方式 Package	COB	防护等级 Ingress Protection	IP 20

本光源不适合安装于密闭灯具内。 Not suitable for fully enclosed fixtures.

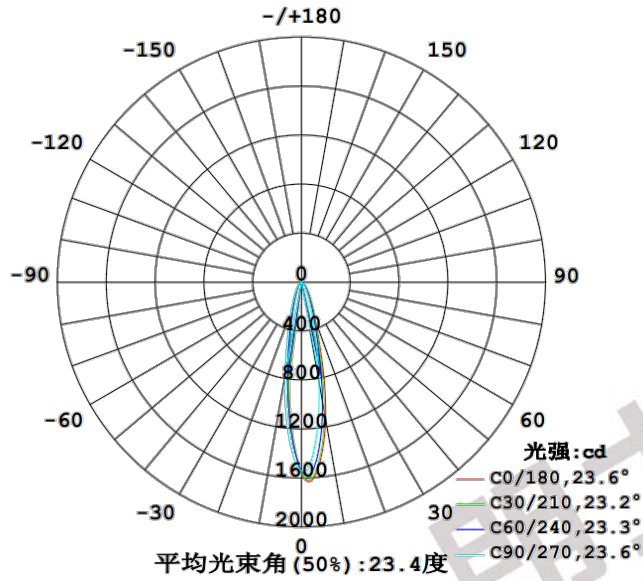
光斑图 Beam Pattern



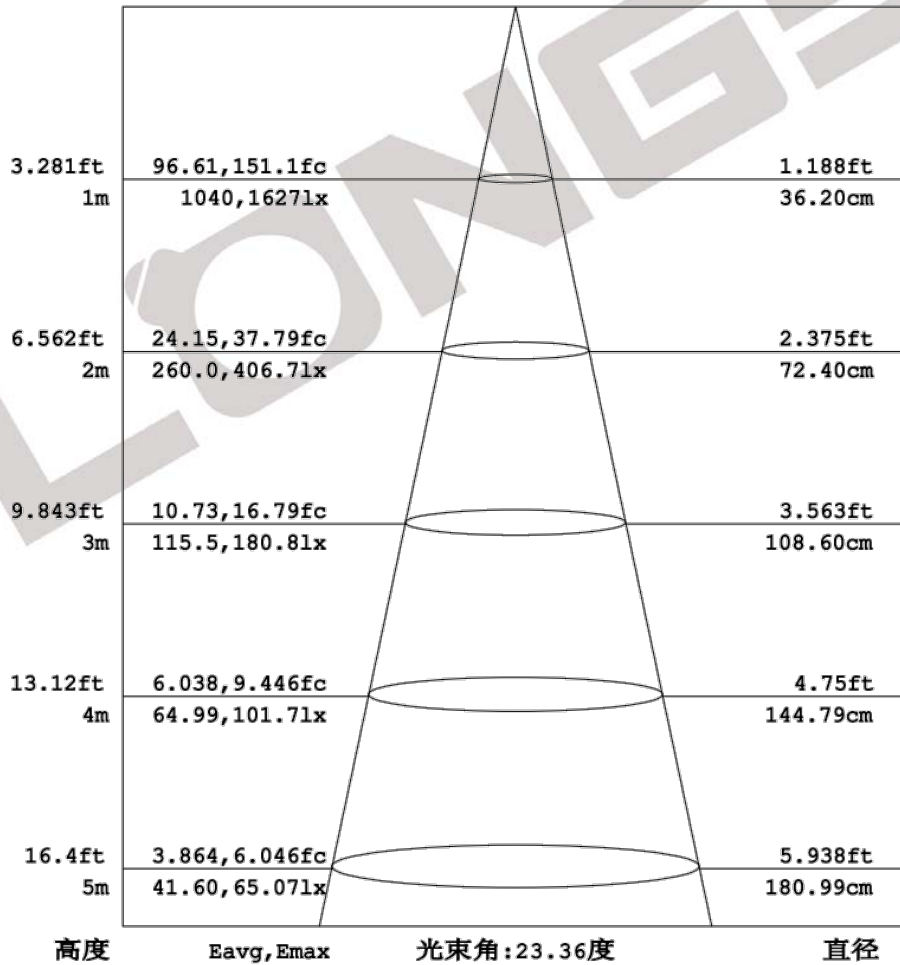
光谱测试报告 Photometric & Colorimetric



光强分布图 Luminous Intensity Distribution Diagram

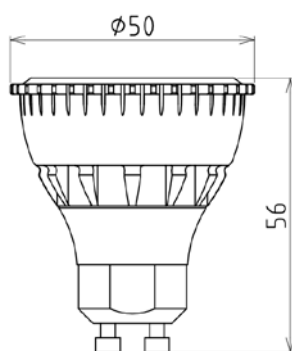


平均照度图 AAI Figure



注: 曲线为灯具在不同投射距离下的照射区域及区域内平均照度。

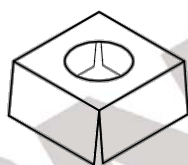
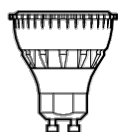
外形尺寸 Dimension (mm)



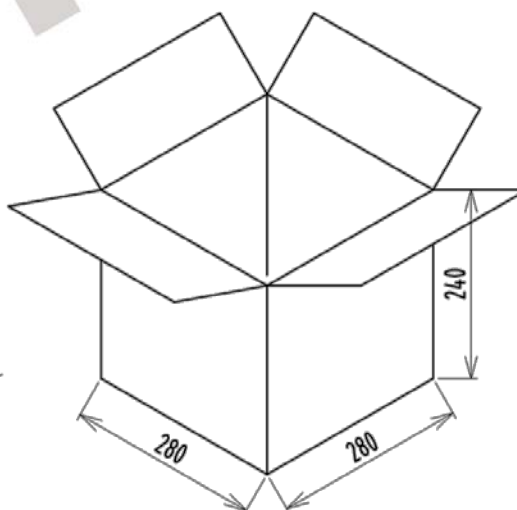
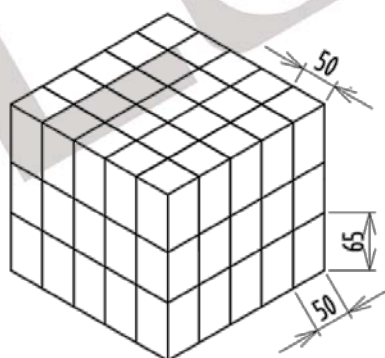
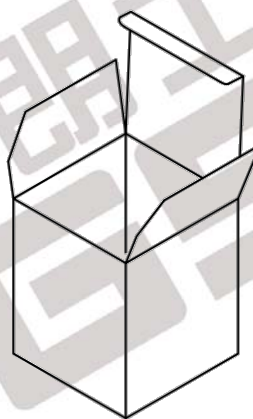
GU10 Base

包装尺寸图 Packing (mm)

纸箱包装 Carton



纸卡 + 内盒



75 个装, 5.2kg

- 规格书中的内容如有更改, 本公司不会主动推送, 请以网站最新版本为准;
- 规格书中的内容只对测试的样品负责, 不作为生产产品的参数标准。